




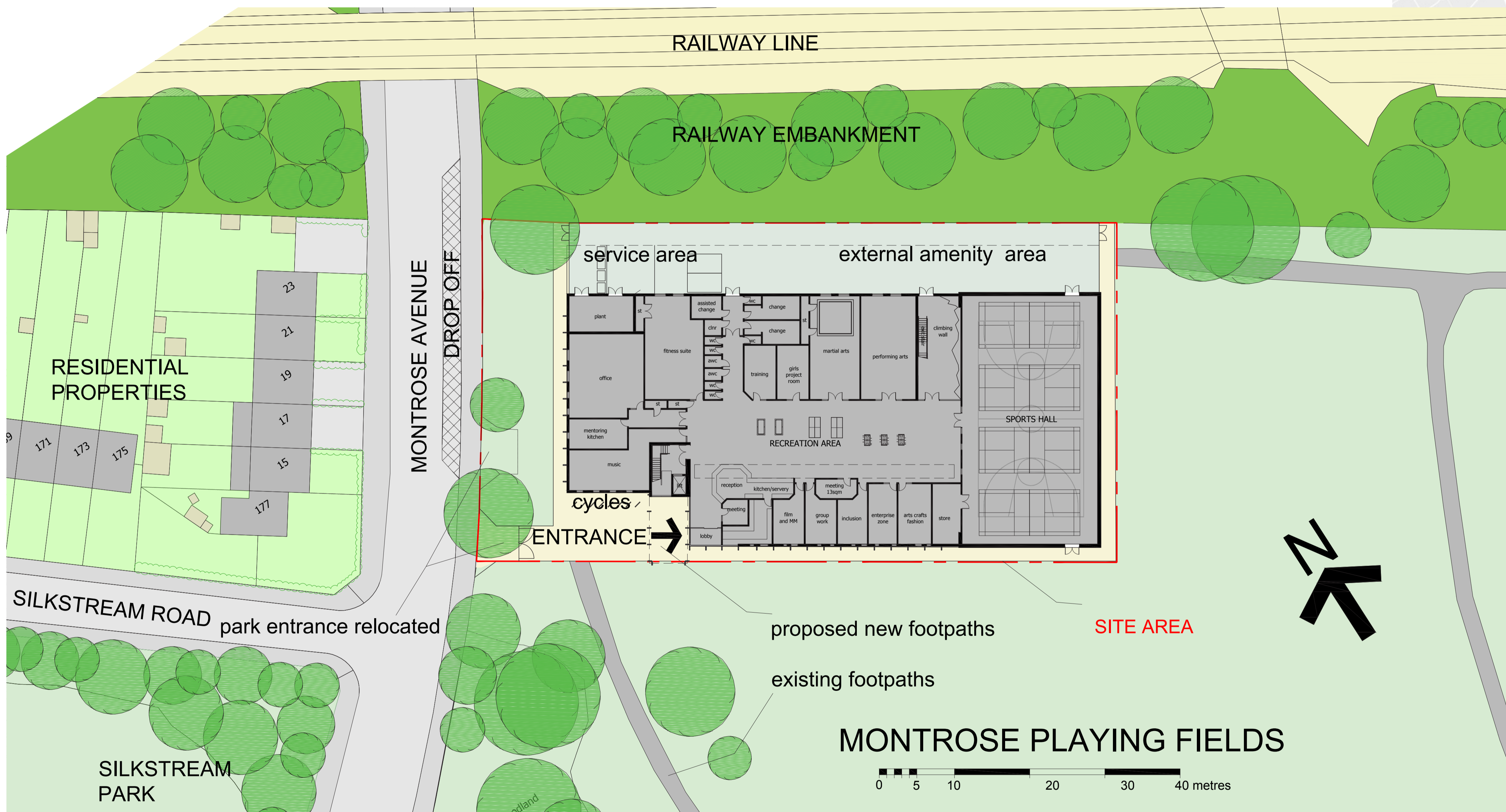
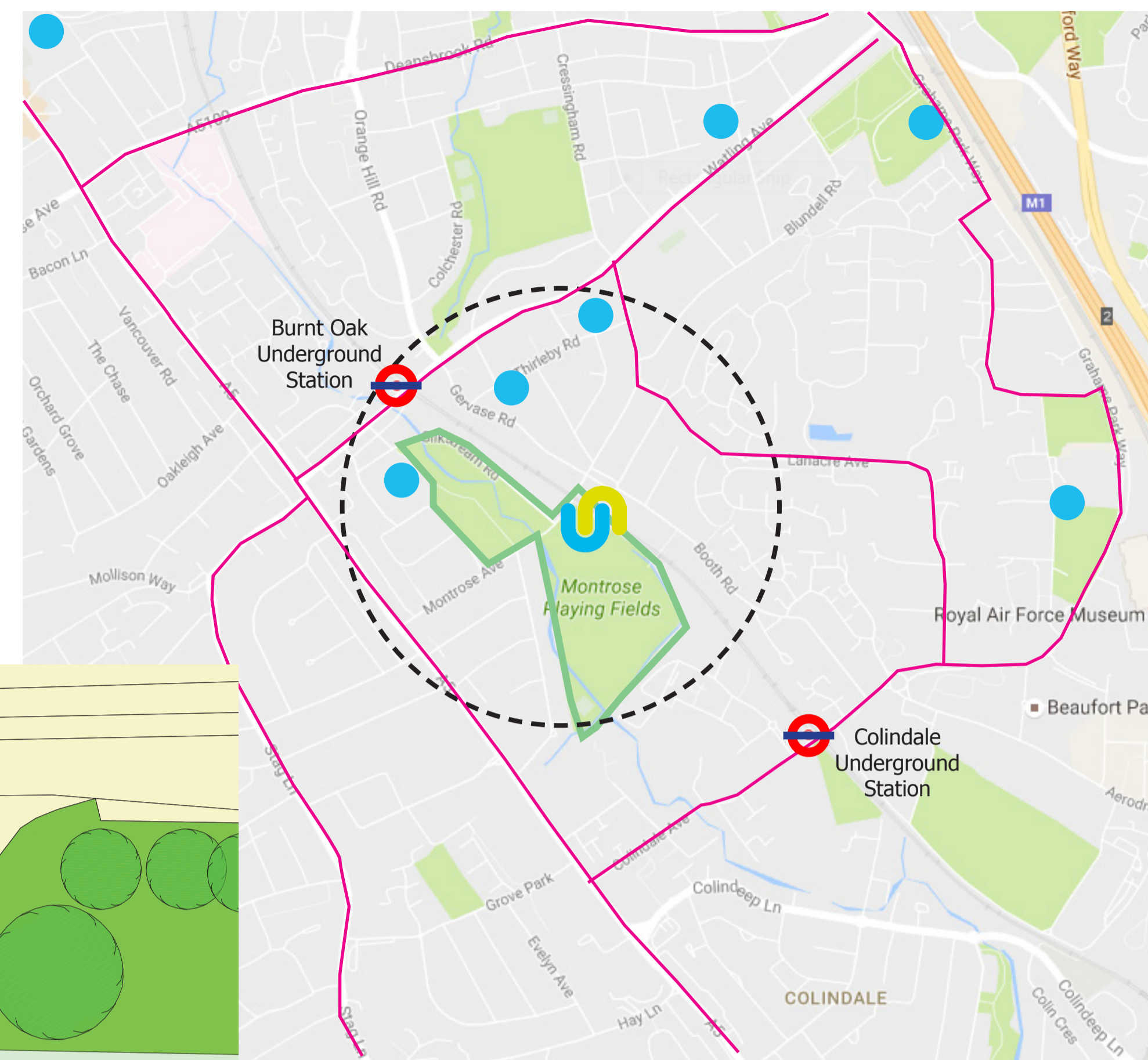






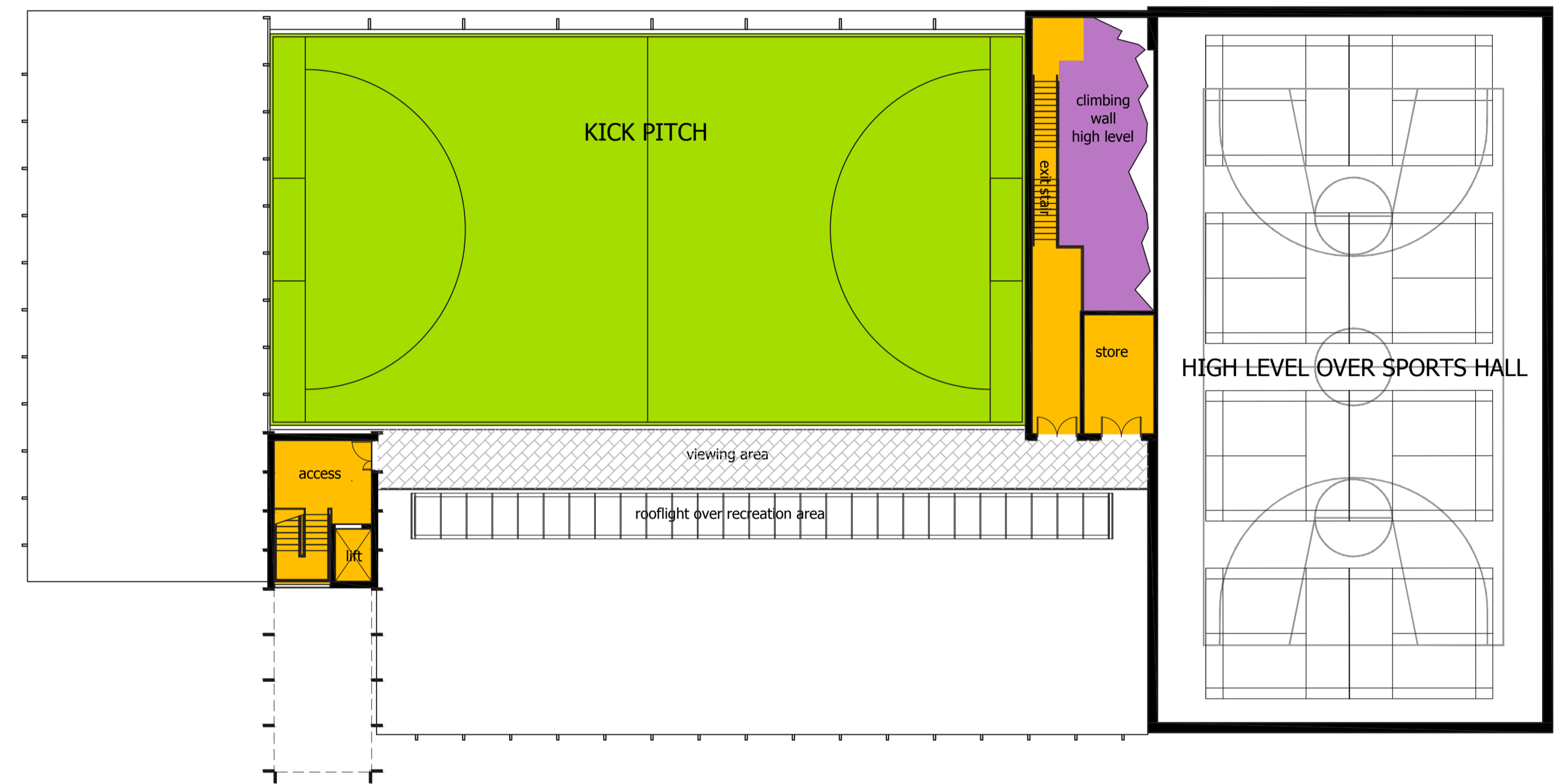
-  Youth Zone Location
-  Schools
-  London Underground Station
-  Bus routes
-  500m radius (5-10 mins walk) from Montrose Avenue park entrance







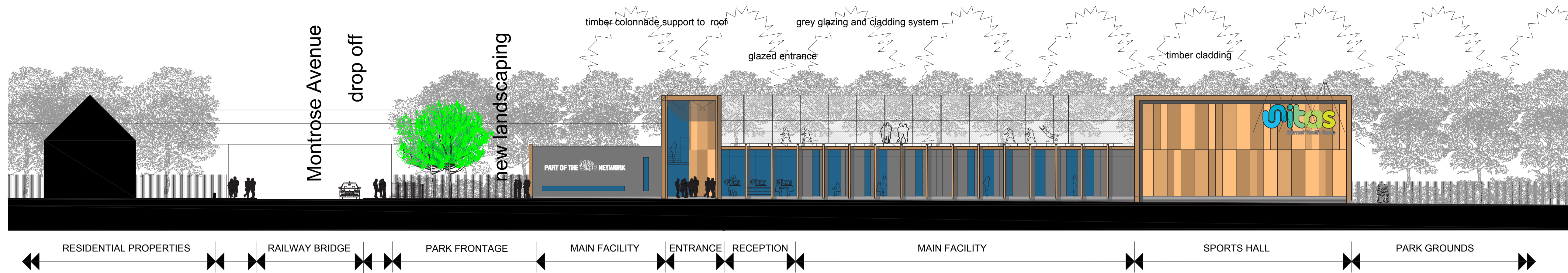
Ground Floor Plan - GIA 2204sqm



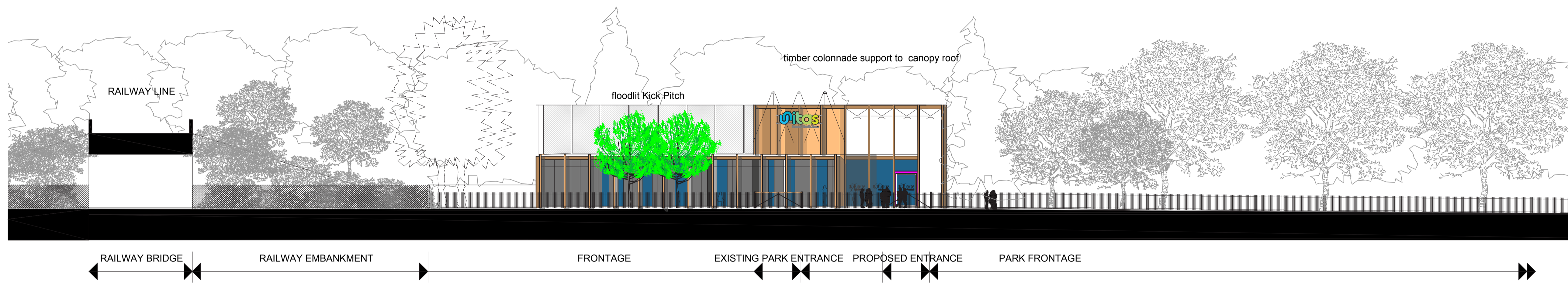
First Floor Plan - GIA 62sqm

-  Circulation Spaces
-  Office / Staff / Back of House
-  Main Activity Rooms
-  WC / Changing Areas
-  Sports Hall
-  Kick Pitch at First Floor on Roof

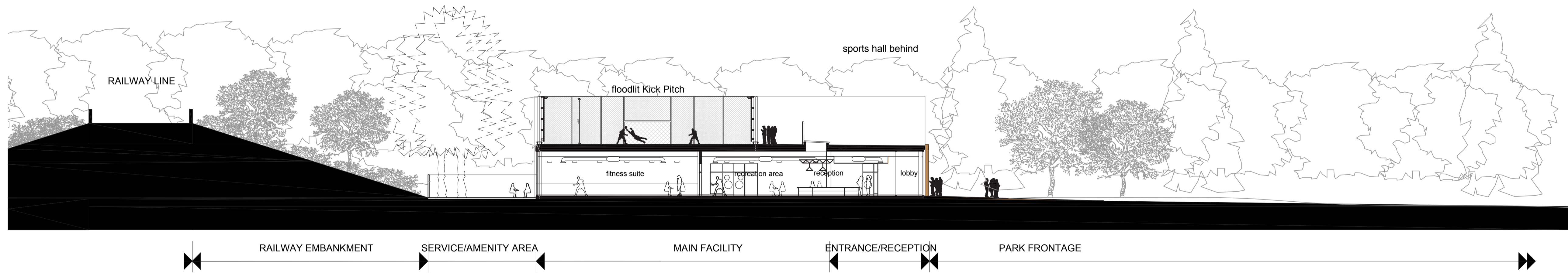




SOUTH EAST ELEVATION FACING MONTROSE PLAYING FIELDS



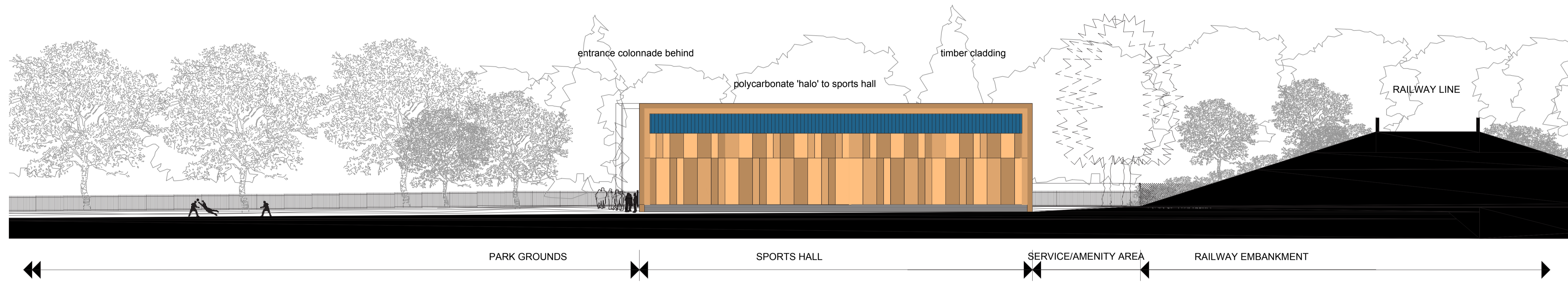
NORTH WEST ELEVATION FACING MONTROSE AVENUE



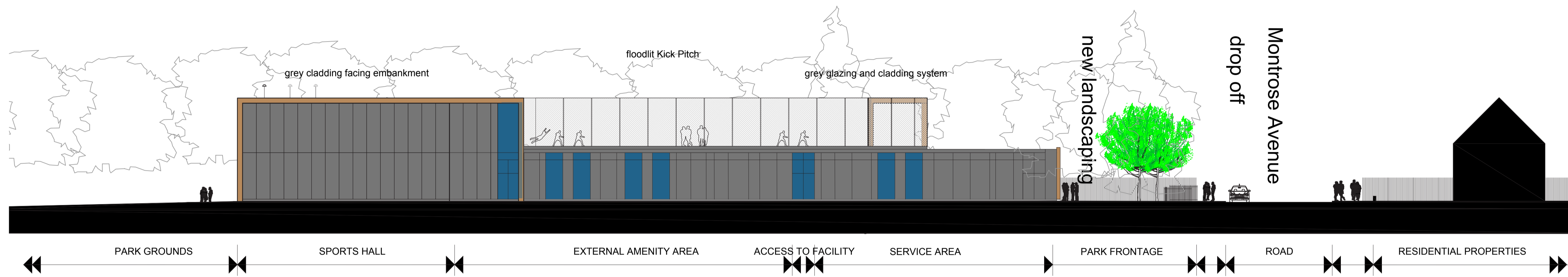
CROSS SECTION THROUGH MAIN FACILITY







SOUTH EAST ELEVATION FACING PARK GROUNDS



NORTH WEST ELEVATION FACING RAILWAY EMBANKMENT

